

CASE STYLES

OUTLINE DIMENSIONS (inch/mm)

case no.	A	B	C	D	E	F	G	H	J	K	L	M	N	P	Q	R	S	T	wt. grams.	NOTES*
AB185	4.76 120.90	3.00 76.20	.53 13.46	.150 3.81	4.610 117.09	1.500 38.10	.125 3.18	.50 12.70	.25 6.35	1.13 28.70	.500 12.70								183	A4, D17
AB186	4.76 120.90	3.00 76.20	.53 13.46	.150 3.81	4.610 117.09	1.500 38.10	.125 3.18	.38 9.65	.25 6.35	.88 22.35	.500 12.70								153	A4, D17
AB204	6.13 155.70	3.00 76.20	.53 13.46	.162 4.11	5.962 151.43	1.500 38.10	.116 2.95	.50 12.70	.25 6.35	1.13 28.70	.50 12.70								215	A4, C2, D17
AF190	.180 4.57	.090 2.29	.020 .51	.100 2.54	.083 2.11	.076 1.93	.005 .13	.022 .56	.210 5.33	.060 1.52	.060 1.52	.060 1.52	.020 0.51						.04	A16, C6, E3, F14
AF320	.200 5.08	.100 2.54	.020 .51	.070 1.78	.068 1.73	.057 1.45	.005 .13	.020 .51	.230 5.84	.065 1.65	.060 1.52	.080 2.03	.040 1.02						.04	A28, C8, E3, F26
AG191	.310 7.87	.400 10.16	.095 2.41	.003 .08	.007 .18	.035 .89	.055 1.40	.020 .51	.050 1.27										.40	A17, C7, E4, F15
AH202	.375 9.53	.500 12.70	.25 6.35	.020 .51	.035 .89	.050 1.27	.140 3.56	.180 4.57	.320 8.13	.360 9.14	.450 11.43	.465 11.81	.095 2.41	.135 3.43	.240 6.10	.280 7.11			.80	A19
AN213	.456 11.58	.487 12.37	.170 4.32	.020 .51	.029 .74	.017 .43	.050 1.27	.035 .89	.022 0.56	.087 2.21	.441 11.20	.300 7.62							2.0	A23, E6, F18
AR214	2.25 57.15	1.38 35.05	1.25 31.75	.50 12.70	.150 3.81	3.100 78.74	.138 3.51	1.238 31.45	3.25 82.55	.12 3.05	.69 17.53	1.50 38.10	.30 7.62	.41 10.41	.71 18.03	.41 10.41	.150 3.81		74.0	A6, A18, D17
AT224	.150 3.81	.150 3.81	.150 3.81	.050 1.27	.030 .76	.025 .64	.028 .71	.065 1.65	.190 4.83	.030 0.76									.15	A21, F17
AT577	.200 5.08	.200 5.08	.200 5.08	.075 1.91	.050 1.27	.025 0.64	.026 0.66	.070 1.78	.220 5.59	.035 0.89									.15	A21, F17
AV243	1.01 25.65	1.63 41.40	1.59 40.39	.30 7.62	1.05 26.67	.14 3.56	.46 11.68	.12 3.05	.030 .76										18	A22, D17
AW254	3.00 76.20	2.06 52.32	1.90 48.26	.100 2.54	2.500 63.50	1.525 38.74	.125 3.18	1.000 25.40	.50 12.70	2.00 50.80									280	A8, C2, D24
AW256	4.50 114.30	2.25 57.15	1.69 42.93	.125 3.18	4.000 101.60	1.625 41.28	.125 3.18	.890 22.61	.44 11.18	3.50 88.90									500	A8, C2, D24
AW257	8.06 204.72	3.25 82.55	2.38 60.45	.125 3.18	7.560 192.02	2.625 66.68	.125 3.18	.890 22.61	.44 11.18	7.06 179.32									1240	A8, C2, D24
AX255	3.00 76.20	2.00 50.80	1.90 48.26	.100 2.54	2.500 63.50	1.525 38.74	.125 3.18	.125 3.175	.50 12.70	—									300	A8, D24

tolerance .x±.1 .xx±.03 .xxx±.015 inch

oz. = grams x.0353

*NOTES:

- A. MATERIAL AND FINISH
 A4. Case material: aluminum alloy. Finish: irridite per MIL-C-5541.
 A6. Case material: aluminum alloy. Finish: blue paint over irridite.
 A8. Case material: aluminum alloy. Finish: case irridite, heat sink black anodize.
 A16. Case material: ceramic. Lead material: #42 alloy. Finish: tin-lead plate.
 A17. Case material: CRS. Lead material: kovar. Finish: gold plate 50 micro inches.
 A18. Mounting bracket finish: irridite or clear anodize.
 A19. Case material plastic, G-10 base. Termination finish: solder plate
 A21. Open-style, ceramic base. Termination finish: solder plate over nickel.
 A22. Case material: aluminum alloy. Finish: nickel plate; heat sink: black anodize.
 A23. Case material: plastic. Lead finish: solder plate.
 A28. Case material: ceramic. Lead material: Kovar. Finish: Solder plate over nickel.
- C. MARKING
 C2. Consecutive marking n = no. of way power splitter.
 C6. RF input lead (1) identified by diagonally cut lead.
 C7. Lead #6 is identified by diagonally cut lead.
 C8. Lead (1) may have diagonal cut. Input and output interchangeable for PAT models only.
- D. CONNECTORS
 D17. Connectors; Female SMA only.
 D24. Connectors: BNC female standard. Type N or SMA consult factory.
- E. SPECIAL TOLERANCES
 E3. Lead width ±.005; lead thickness ±.002; cap diameter ±.005 inch.
 E4. All tolerances are ±.005 except where minimum or maximum limits are shown.
 E6. Lead width ±.005 inch.
- F. PACKAGING
 F1-29. Tape and reel packaging available. See Tape & Reel packaging information for details.
 To order Tape & Reel version add -TR suffix to model.



Distribution Centers NORTH AMERICA 800-654-7949 • 417 335-5935 • Fax 417-335-5945 • EUROPE 44-1252-832600 • Fax 44-1252-837010

INTERNET <http://www.minicircuits.com>

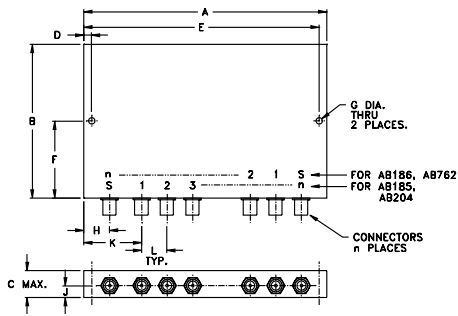
P.O. Box 350166, Brooklyn, New York 11235-0003 (718) 934-4500 Fax (718) 332-4661

ISO 9001 CERTIFIED

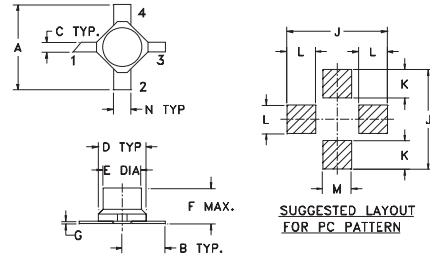
000309

OUTLINE DRAWINGS

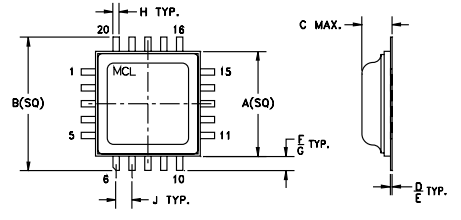
AB



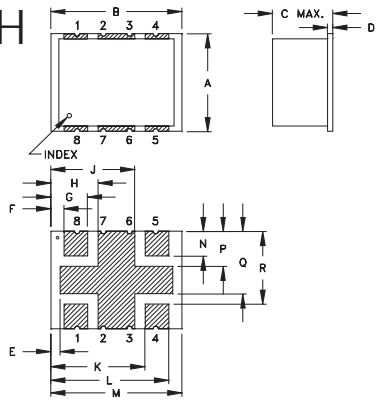
AF



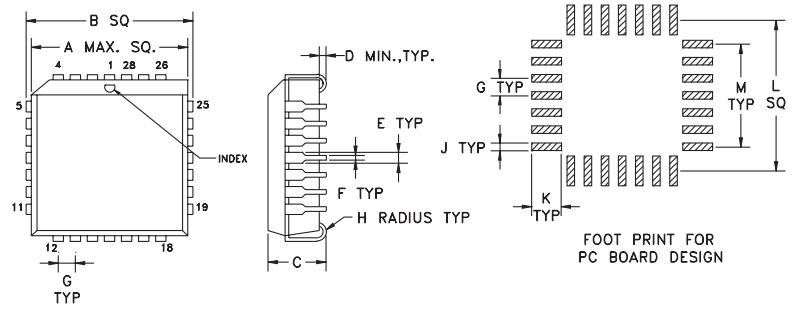
AG



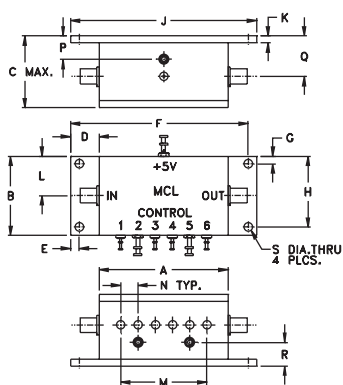
AH



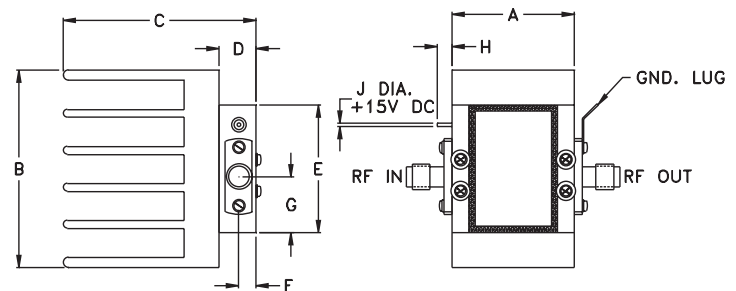
AN



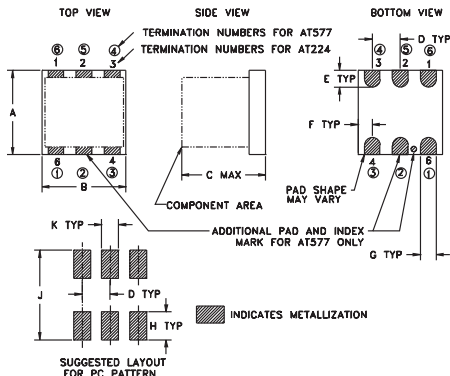
AR



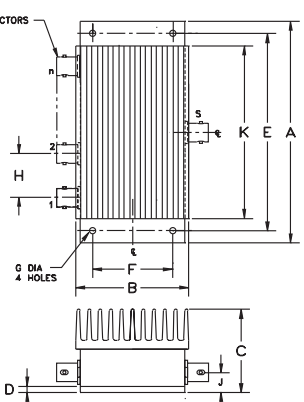
AV



AT



AW



AX

